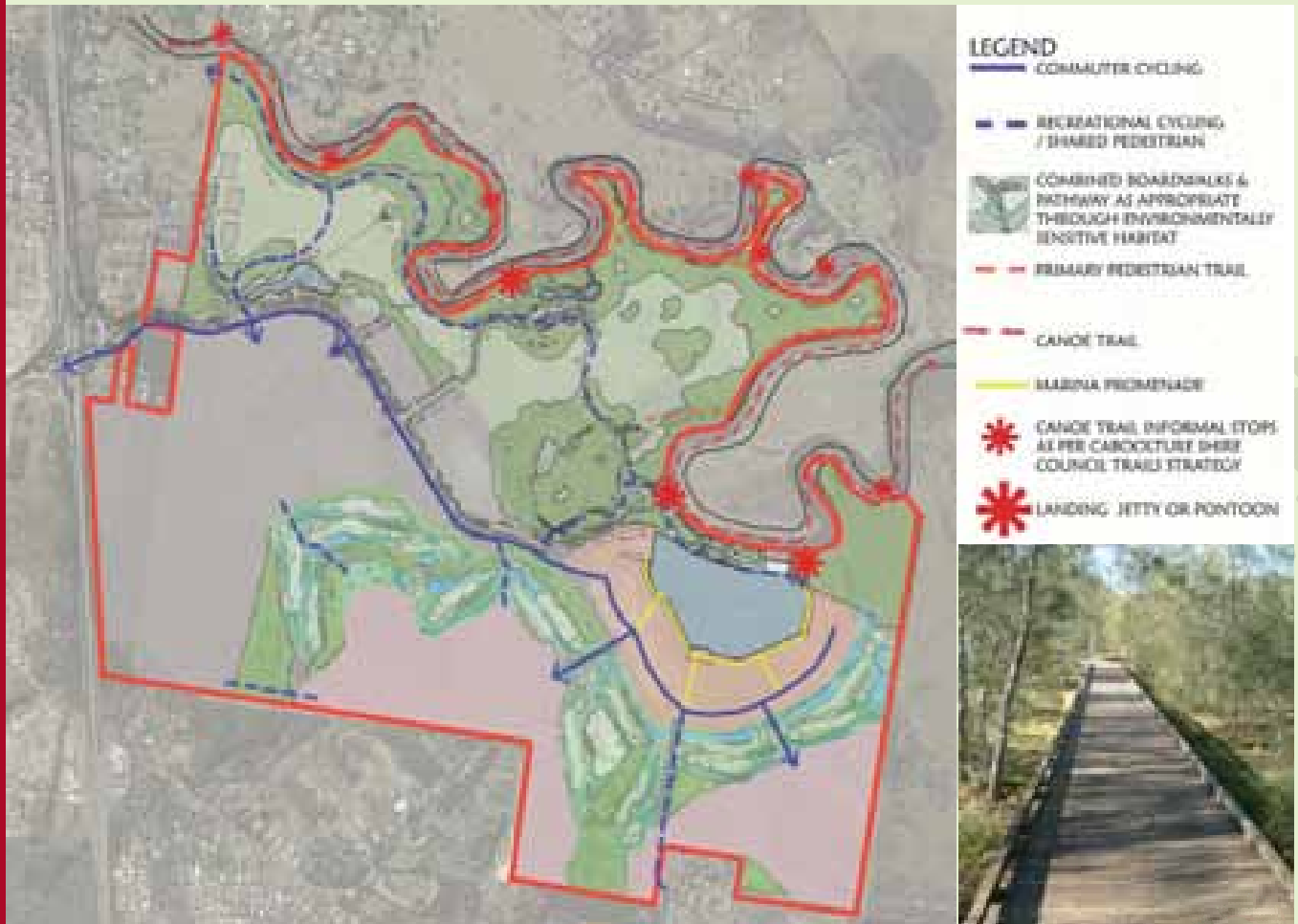


# Getting out and about

## Enjoying Northeast Business Park



### **Pedestrian and Bicycle Traffic**

Studies are being undertaken to design a comprehensive network of roads, walkways and cycle paths.

These links, together with connections to existing and new bus routes, will make Northeast Business Park easily accessible using many modes of transport.

The streets of Northeast Business Park will be designed with the needs of pedestrians and cyclists in mind.

To make walkways accessible, wide footpaths with shaded areas and seating are proposed. Well-lit walkways will also be provided throughout Northeast Business Park.

Off-road bike paths through parkland, suitable for recreational cyclists, will be shared with pedestrians.

Farry Road and surrounding residents will be able to access Northeast Business Park via walk ways and bike paths.