



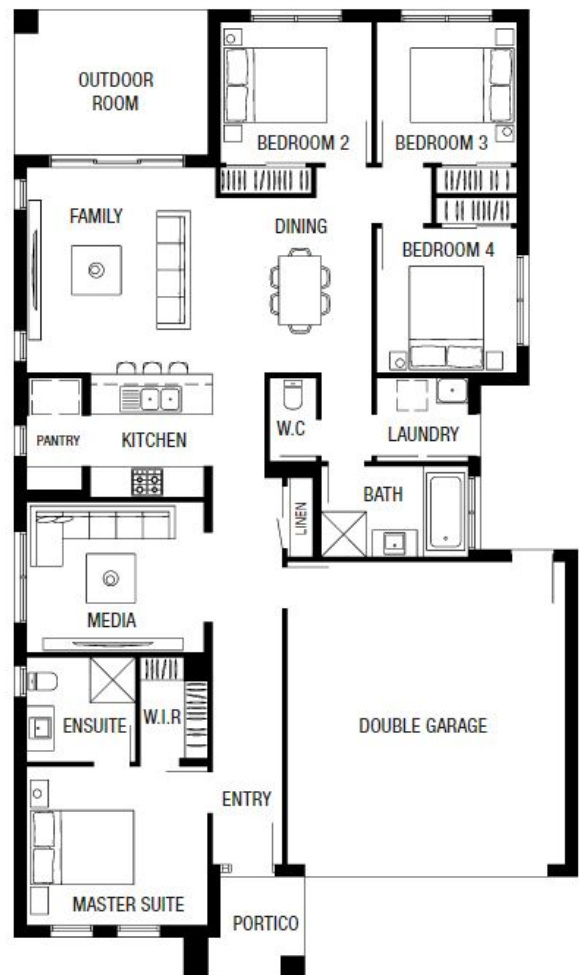
Lucent 20 MK2 Yale

4  2  2 

\$

When you choose Metricon Homes, you're choosing a builder with more than 45 years of experience, who has helped thousands of Australian families to truly love where they live. The Lucent 20 MK2 with the Yale Façade is a prime example. This 4 bedroom home includes a media room. The master bedroom is located away from the main living area for added privacy. The kitchen includes a walk-in pantry.

- Fixed site costs
- Fixed price package
- Covenant requirements included
- Modern, fitted kitchen
- Opticomm ready



m
metricon

 North Harbour

For more information, please phone our sales team on
07 5433 1111 or visit northharbour.com.au