



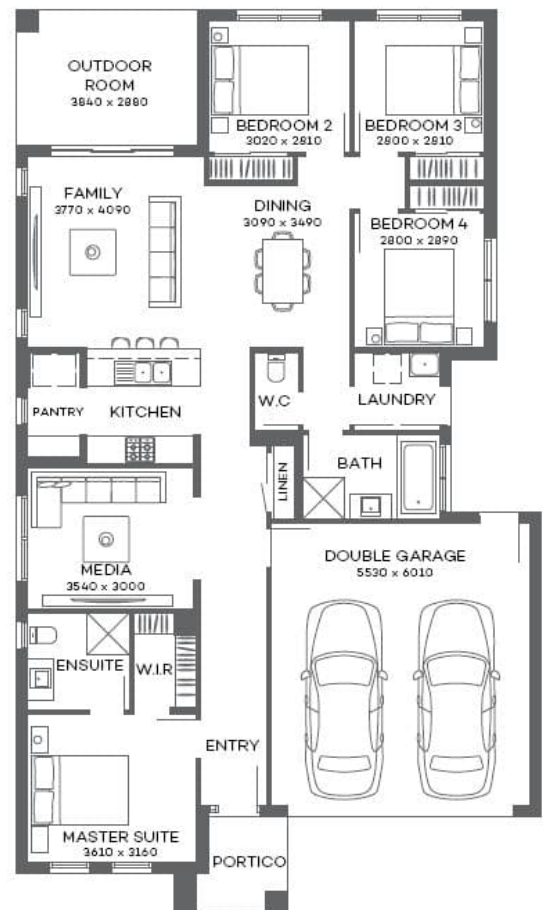
Lucent 20 Aspen

4  2  2 

\$490,500

At the heart of this home by Metricon you will find the modern kitchen complete with European appliances and walk-in pantry. The layout of the Lucent 20MK2 design sees an open plan living and dining area straight off the kitchen and flowing out to the outdoor living area via sliding doors making for great entertaining. There is also a dedicated media room for the movie and/or sport enthusiasts. The master suite is set apart from the main living areas for added privacy.

- Perfect for growing families
- Exposed aggregate driveway and path
- Turf to front
- European designed kitchen appliances
- Dedicated media room
- Stained timber entry door



For more information, please phone our sales team on **07 5433 1111** or visit **northharbour.com.au**