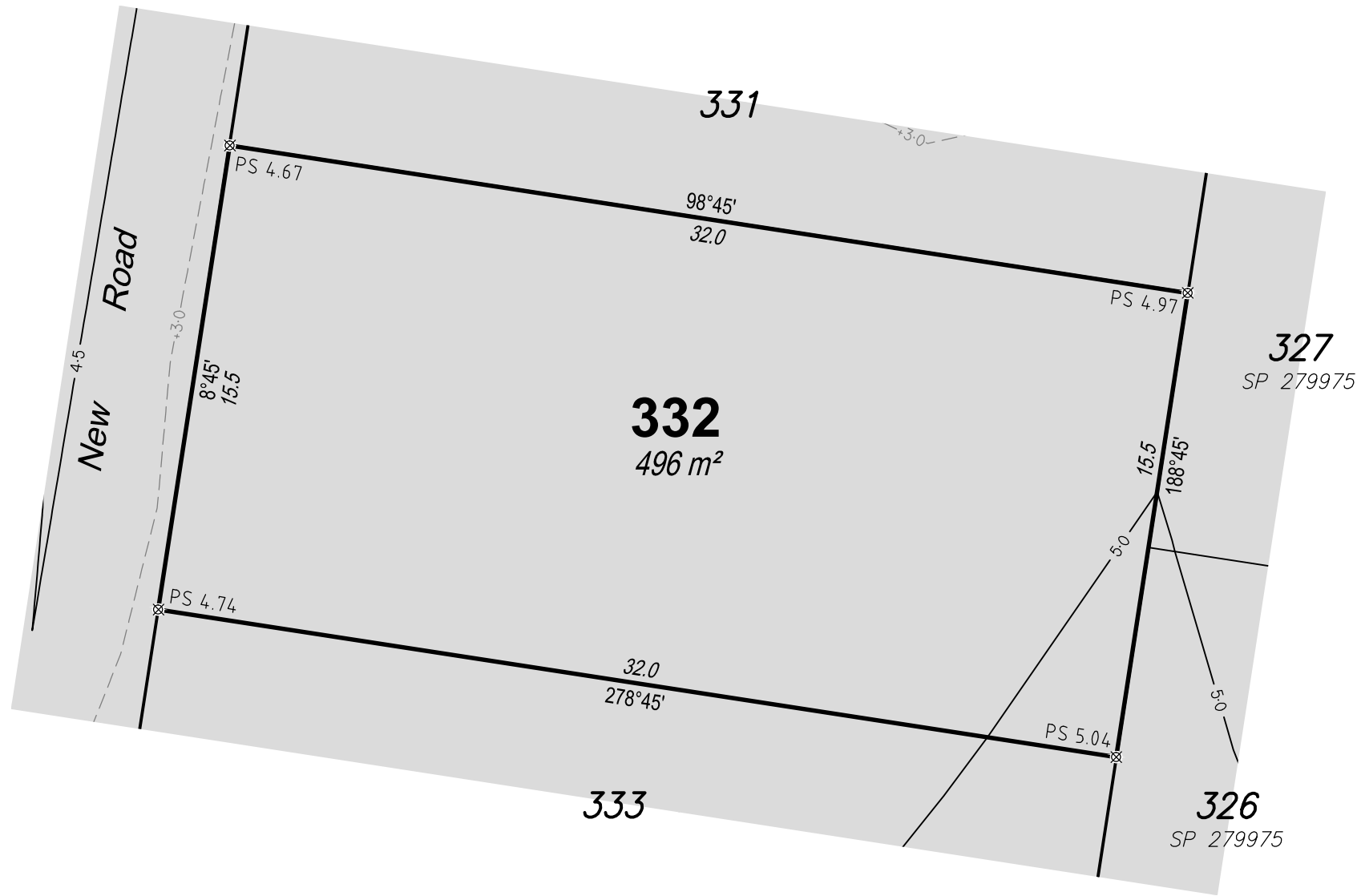


The Contractor shall complete all allotment earthwork operations in such a manner, to allow an approved Geotechnical testing company's certification that site filling has been placed as Level 1 "Controlled Fill" in accordance with the provisions of AS 3798-2007. The frequency of control testing shall be in accordance with the provisions of Table 8.1 of AS 3798-2007.



DISCLOSURE PLAN

For Proposed Lot 332
on SP279976,
North Harbour
Stage 11

CURRENTLY DESCRIBED AS
RPD Lot 2000 on SP279967

LOCALITY Burpengary East
LOCAL AUTHORITY Moreton Bay Regional Council

Legend

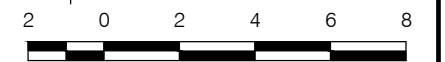
- Area of Fill
- Proposed Surface Contour
- Fill Depth Contour
- Proposed Surface Level
- Proposed Earthworks Batter

Notes

- Area & Dimensions are subject to Survey Plan Registration.
- Proposed contours, fill and retaining wall details are compiled from the engineering design plans provided by KN Group Pty Ltd, received on 02/09/2016.
- Due to plotting limitations the retaining walls shown are indicative only and may not show the true width of the wall.
- Levels shown are referenced to the Australian Height Datum (AHD)
- This plan was prepared to satisfy Section 11 of the *Land Sales Act QLD 1984*.
- Builders shall not build off the design levels shown; a site survey is required.
- These notes are an integral part of this plan.



SCALE 1:200 SHEET SIZE A3



RPS RPS Australia East Pty Ltd
743 Ann Street
Fortitude Valley Qld 4006
t: +61 7 3237 8899
f: +61 7 3237 8833
www.rpsgroup.com.au

© COPYRIGHT PROTECTS THIS PLAN
Unauthorised reproduction or amendment
not permitted. Please contact the author.

This plan has been prepared by RPS Australia East Pty Ltd
(Cadastral Surveyor) to satisfy the requirements of the Land Sales
Act 1984.

DWG. 20430 Stage 11 Dis SH. 1 of 1

DATE	PROJECT	PLAN	AMD.
09/09/16	20430	164/332	-