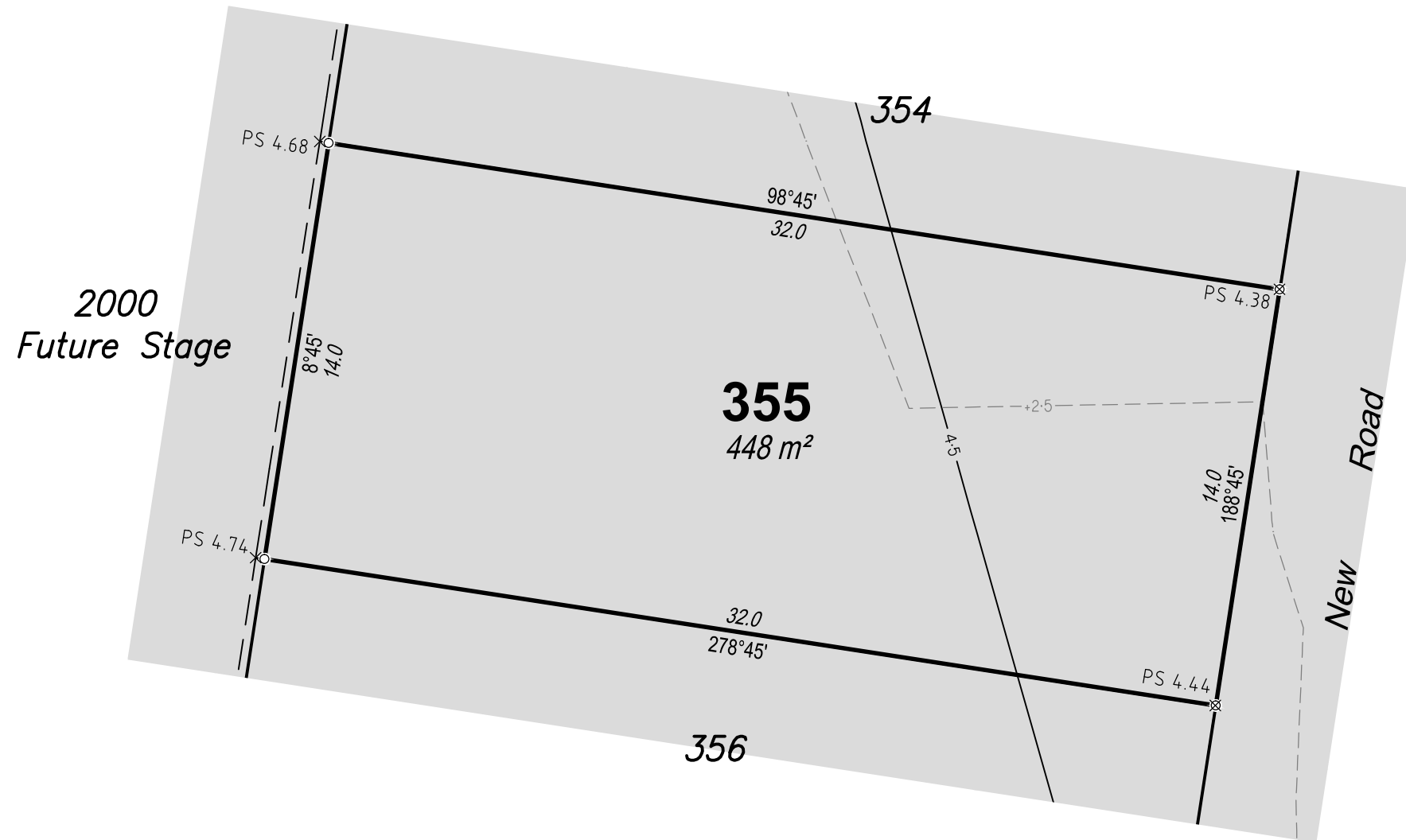


The Contractor shall complete all allotment earthwork operations in such a manner, to allow an approved Geotechnical testing company's certification that site filling has been placed as Level 1 "Controlled Fill" in accordance with the provisions of AS 3798-2007. The frequency of control testing shall be in accordance with the provisions of Table 8.1 of AS 3798-2007.



## DISCLOSURE PLAN

For Proposed Lot 355  
on SP279976,  
North Harbour  
Stage 11

CURRENTLY DESCRIBED AS  
RPD Lot 2000 on SP279967

LOCALITY Burpengary East  
LOCAL AUTHORITY Moreton Bay Regional Council

### Legend

|                            |  |
|----------------------------|--|
| Area of Fill               |  |
| Proposed Surface Contour   |  |
| Fill Depth Contour         |  |
| Proposed Surface Level     |  |
| Proposed Earthworks Batter |  |

### Notes

- Area & Dimensions are subject to Survey Plan Registration.
- Proposed contours, fill and retaining wall details are compiled from the engineering design plans provided by KN Group Pty Ltd, received on 02/09/2016.
- Due to plotting limitations the retaining walls shown are indicative only and may not show the true width of the wall.
- Levels shown are referenced to the Australian Height Datum (AHD)
- This plan was prepared to satisfy Section 11 of the *Land Sales Act QLD 1984*.
- Builders shall not build off the design levels shown; a site survey is required.
- These notes are an integral part of this plan.



SCALE 1:200 SHEET SIZE A3



**RPS** RPS Australia East Pty Ltd  
743 Ann Street  
Fortitude Valley Qld 4006  
t: +61 7 3237 8899  
f: +61 7 3237 8833

© COPYRIGHT PROTECTS THIS PLAN  
Unauthorised reproduction or amendment  
not permitted. Please contact the author.

[www.rpsgroup.com.au](http://www.rpsgroup.com.au)  
This plan has been prepared by RPS Australia East Pty Ltd  
(Cadastral Surveyor) to satisfy the requirements of the Land Sales  
Act 1984.

DWG. 20430 Stage 11 Dis SH. 1 of 1

| DATE     | PROJECT | PLAN    | AMD. |
|----------|---------|---------|------|
| 09/09/16 | 20430   | 164/355 | -    |