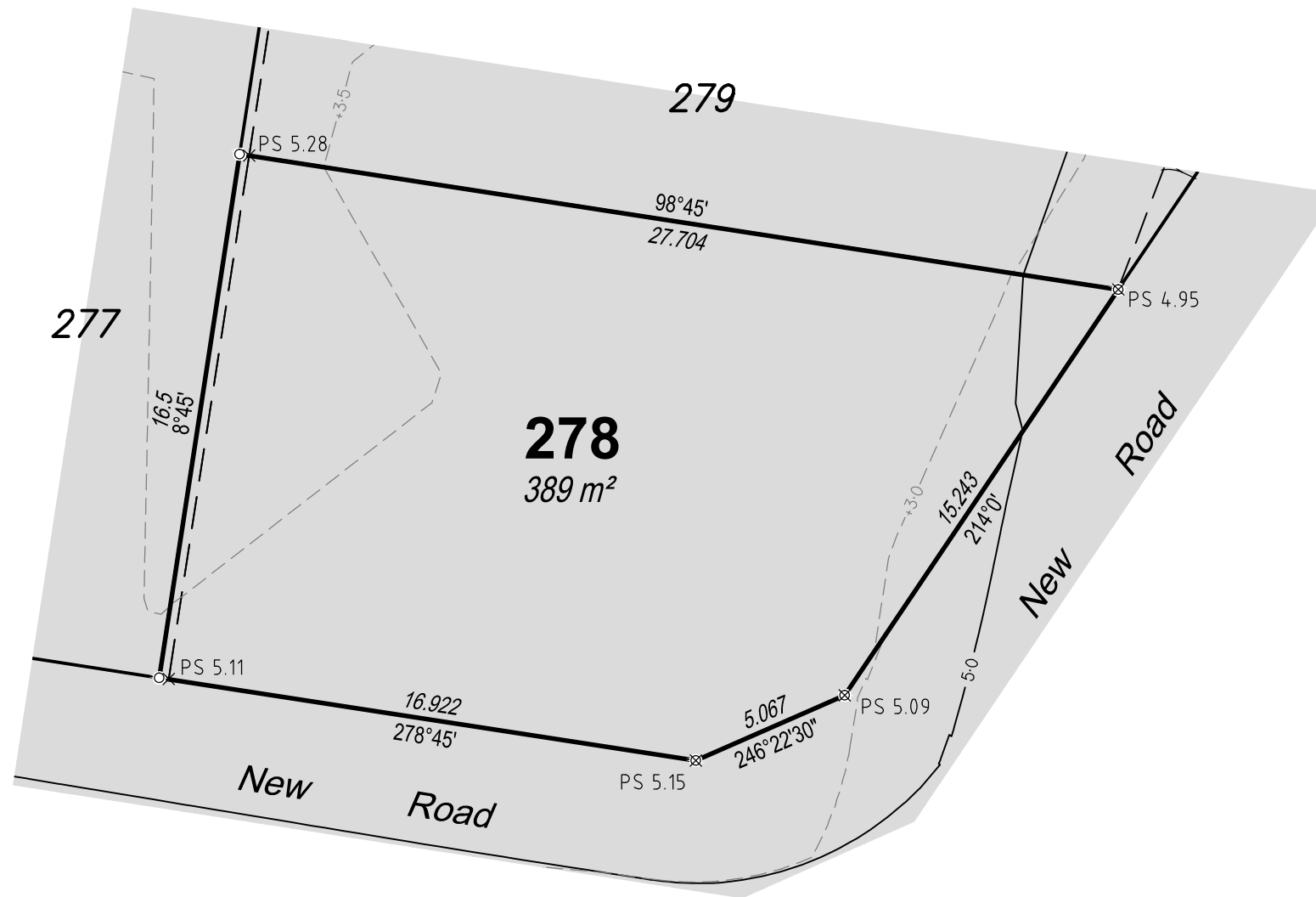


The Contractor shall complete all allotment earthwork operations in such a manner, to allow an approved Geotechnical testing company's certification that site filling has been placed as Level 1 "Controlled Fill" in accordance with the provisions of AS 3798-2007. The frequency of control testing shall be in accordance with the provisions of Table 8.1 of AS 3798-2007.



## DISCLOSURE PLAN

For Proposed Lot 278 on  
SP279974,  
North Harbour  
Stage 9

CURRENTLY DESCRIBED AS  
RPD Lot 200 on SP285043

LOCALITY Burpengary East  
LOCAL AUTHORITY Moreton Bay Regional Council

### Legend

Area of Fill	
Proposed Surface Contour	
Fill Depth Contour	
Proposed Surface Level	PS 6.120
Proposed Earthworks Batter	

### Notes

- Area & Dimensions are subject to Survey Plan Registration.
- Proposed contours, fill and retaining wall details are compiled from the engineering design plans provided by KN Group Pty Ltd, received on 10/06/2016.
- Due to plotting limitations the retaining walls shown are indicative only and may not show the true width of the wall.
- Levels shown are referenced to the Australian Height Datum (AHD)
- This plan was prepared to satisfy Section 11 of the *Land Sales Act QLD 1984*.
- Builders shall not build off the design levels shown; a site survey is required.
- These notes are an integral part of this plan.



SCALE 1:200 SHEET SIZE A3



**RPS** RPS Australia East Pty Ltd  
743 Ann Street  
Fortitude Valley Qld 4006  
t: +61 7 3237 8899  
f: +61 7 3237 8833

© COPYRIGHT PROTECTS THIS PLAN  
Unauthorised reproduction or amendment  
not permitted. Please contact the author.

[www.rpsgroup.com.au](http://www.rpsgroup.com.au)

This plan has been prepared by RPS Australia East Pty Ltd  
(Cadastral Surveyor) to satisfy the requirements of the Land Sales  
Act 1984.

DWG. 20430 Stage 9 Dis SH. 1 of 1

DATE	PROJECT	PLAN	AMD.
18/07/16	20430	152/278	-