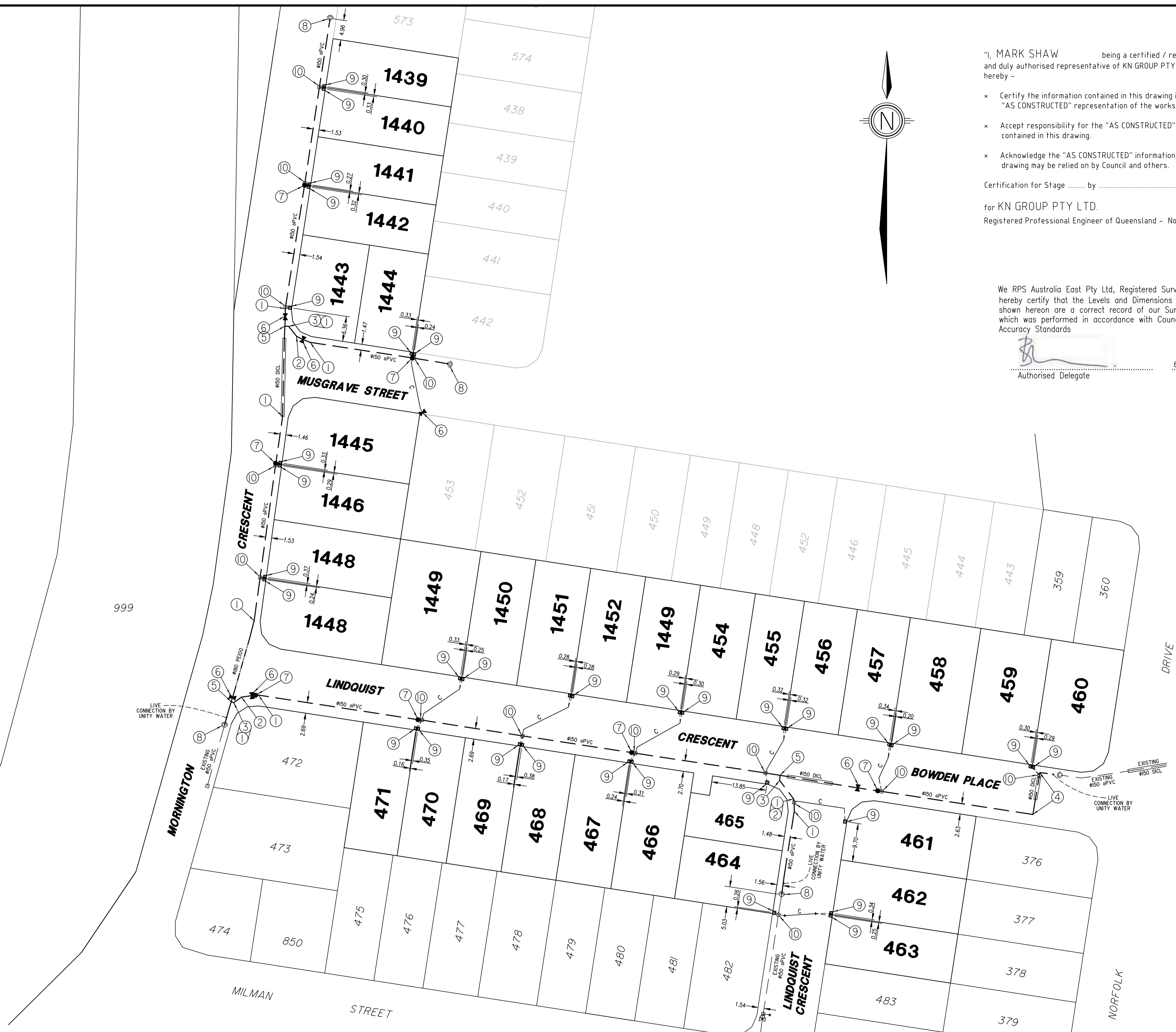


LEGEND	
	#150 oPVC PN16 Water Main
	#100 uPVC PN20 Service Conduit
	#25 PE100 PN16 Service Pipe
	#150 D1CL Water Main
	#180 PE100 PN16 Water Main

TABLE OF FITTINGS	
ITEM #	DESCRIPTION
1	150ø * 11.25° BEND
2	150ø * 22.5° BEND
3	150ø * 45° BEND
4	150ø * 90° BEND
5	150ø * 150ø TEE
6	150ø VALVE
7	HYDRANT
8	TEMPORARY HYDRANT/END
9	WATER METER
10	READYTAP



"I, MARK SHAW being a certified / registered engineer and duly authorised representative of KN GROUP PTY LTD hereby -

- × Certify the information contained in this drawing is an accurate "AS CONSTRUCTED" representation of the works.
- × Accept responsibility for the "AS CONSTRUCTED" information contained in this drawing.
- × Acknowledge the "AS CONSTRUCTED" information contained in the drawing may be relied on by Council and others.

Certification for Stage by on

for KN GROUP PTY LTD.
Registered Professional Engineer of Queensland - No. 17544

We RPS Australia East Pty Ltd, Registered Surveyor - Land hereby certify that the Levels and Dimensions shown hereon are a correct record of our Survey which was performed in accordance with Council Accuracy Standards

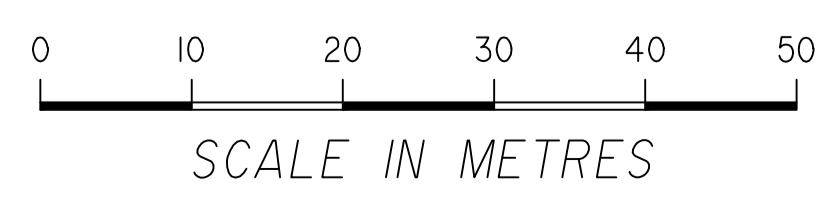
Authorised Delegate

6/11/2017
Date

A1

INDEX	DATE	REVISIONS	DRAWN	CHECKED	PASSED
-	-	-	-	-	-
-	-	-	-	-	-
-	-	-	-	-	-
-	-	-	-	-	-
A	2017	ORIGINAL ISSUE	RPS	RPS	-

DRAWN	KCH	2017
CHECKED	RPS	2017
PASSED	-	-
INITIALS	DATE	



Unitywater

NORTHEAST BUSINESS PARK C/- KN GROUP PTY LTD CONSULTING ENGINEERS
NORTH HARBOUR - STAGE 15
AS CONSTRUCTED WATER RETICULATION

SCALE	1500 at A1
SHEET	1 OF 1 SHEETS
DRAWING NO.	20430-208