

Original information compiled from SP283244
in the Department of Natural Resources,
Mines & Energy.
For Details of Lots 799-812 & 825-830.
For Details of Lots 813-824 & 831-836.
For Details of Lot 997.
See Sheet 8.
See Sheet 9.
For Reference & Permanent Marks tables.
See Sheet 9.

Scale: 1:7500
Format: STANDARD
Barcode: SP309372

Plan of Lots 799-836, 997 & 2000
Cancelling Lot 2000 on SP283244
LOCAL GOVERNMENT: MORETON BAY
REGIONAL COUNCIL
LOCALITY: EAST BURPENGARY
Meridian: MGA Zone 56 wide SP309348
Survey Records: No

T.H. JENSEN & BOWERS Pty Ltd (ACN 010 872 607) hereby certify that the land comprised in this plan was surveyed by the corporation, by Scott James Morrison, registered surveyor, for whose work the corporation accepts responsibility, under the supervision of David George BURKE, cadastral surveyor and that the plan is accurate, that the plan was prepared in accordance with the Survey and Mapping (Standards) Act 2003 and Surveyors Act 2003 and applicable standards, and that the said survey was completed on 17/07/2020.

T.H. JENSEN
Director
Date: 17/07/2020

720249566

\$4510.00
04/09/2020 14:04

CE 400 NT

1. Certificate of Registered Owners or Lessees.

I/We **NORTH HARBOUR HOLDINGS PTY LTD**
A.C.N. 101 569 457

(Names in full)

* as Registered Owners of this land agree to this plan and dedicate the Public Use Land as shown hereon in accordance with Section 50 of the Land Title Act 1994.

* as Lessees of this land agree to this plan.

Bikzi

Signature of *Registered Owners *Lessees

by its duly authorised attorney Bryan Kenneth Finney under Power of Attorney No. 719219873, who certifies he has not received any notice of revocation of same.

717603777 and 719513796

* Rule out whichever is inapplicable

2. Planning Body Approval.

* **MORETON BAY REGIONAL COUNCIL**

hereby approves this plan in accordance with the:

% **Planning Act 2016**

Dated this 28th day of August 2020

[Signature]

Delegated Officer
Amy White
Coordinator Development
Assessment North

* Insert the name of the Planning Body.
Insert designation of signatory or delegation

3. Plans with Community Management Statement:

CMS Number:

Name:

4. References:

Dept File: DA13165412014
Local Govt: 77615
Surveyor: 7550
Sales Tax Asses: 2020-1268

WARNING : Folded or Mutilated Plans will not be accepted.
Plans may be rolled.

Information may not be placed in the outer margins.

s. Lodged by

Lember And Williams
PO Box 779
CABOOLTURE QLD 4510
P (07) 5495 1499
F (07) 5495 7066

admin@lambw.com.au

Lodger Code

011

(Include address, phone number, reference, and Lodger Code)

| Existing | | Created | |
|-----------------|----------------------|---------------------|--------|
| Title Reference | Description | New Lots | Road |
| 51335746 | Lot 2000 on SP283244 | 799-836, 997 & 2000 | New Rd |

MORTGAGE ALLOCATIONS

| Mortgage | Lots Fully Encumbered | Lots Partially Encumbered |
|-----------|-----------------------|---------------------------|
| 717642509 | 799-836, 997 | 2000 |
| 717884891 | | 2000 |
| 719669204 | 799-836, 997 & 2000 | |

ENCUMBRANCE EASEMENT ALLOCATIONS

| Easement | Lots to be Encumbered |
|--|-----------------------|
| 718203195 (Emt AI on SP289824) | 2000 |
| 718203196 (Emt AB on SP289824) | 2000 |
| 718314190 (Emts AP-AR on SP289854) | 2000 |
| 718314181 (Emt AS on SP289854) | 2000 |
| 718659661 (Emt AB on SP289824) | 2000 |
| 719008080 (Emt BL on SP288106) | 2000 |
| 719008082 (Emt BM on SP288106) | 2000 |
| 719222802 (Emts BS, BT & BV on SP309295) | 2000 |
| 716509989 (Emt E on SP275743) | 2000 |
| 718681132 (Emt AU on SP289850) | 2000 |
| 719008084 (Emts BQ-BQ on SP288121) | 2000 |
| 719008084 (Emt BR on SP288121) | 997 |
| 719222802 (Emt BS on SP309295) | 997 |

EXISTING ADMINISTRATIVE ADVISE ALLOCATIONS

| Administrative Advice | Lots to be Encumbered |
|-----------------------|-----------------------|
| 715951651 | 799-836, 997 & 2000 |
| 718706290 | 799-836, 997 & 2000 |

Easement Number 719008084 (Emt BP on SP288121) partially absorbed by new road.

Easement Number 717335275 (Emts Y & Z on SP285053) to be surrendered prior to registration of this plan.

REINSTATEMENT REPORT

Original marks placed and/or referenced on SP279891, SP279909, SP283244 & SP288124 have been used to reinstate the subject boundaries on this plan.

AMENDMENTS BY T.H. JENSEN & BOWERS PTY LTD

S.M.
(DIRECTOR) 15/09/2020 (DATE)

9. Building Format Plans only.
I certify that:
* As far as it is practical to determine, no part of the building shown on this plan encroaches onto adjoining lots or roads
* Part of the building shown on this plan encroaches onto adjoining * lots and road

| | |
|---------|-------------------|
| 997 | Pors 10 & 24 |
| 799-836 | Por 10 |
| 2000 | Pors 10, 24 & 105 |

| Lots | Orig |
|---------------------------|------|
| 7. Orig Grant Allocation: | |

8. Passed & Endorsed: 15.9.2020
By: *T.H. Jensen & Bowers Pty Ltd*
Date: 7-7-2020
Signed: *S. G. Burke*
Designation: *S. G. Burke* Director

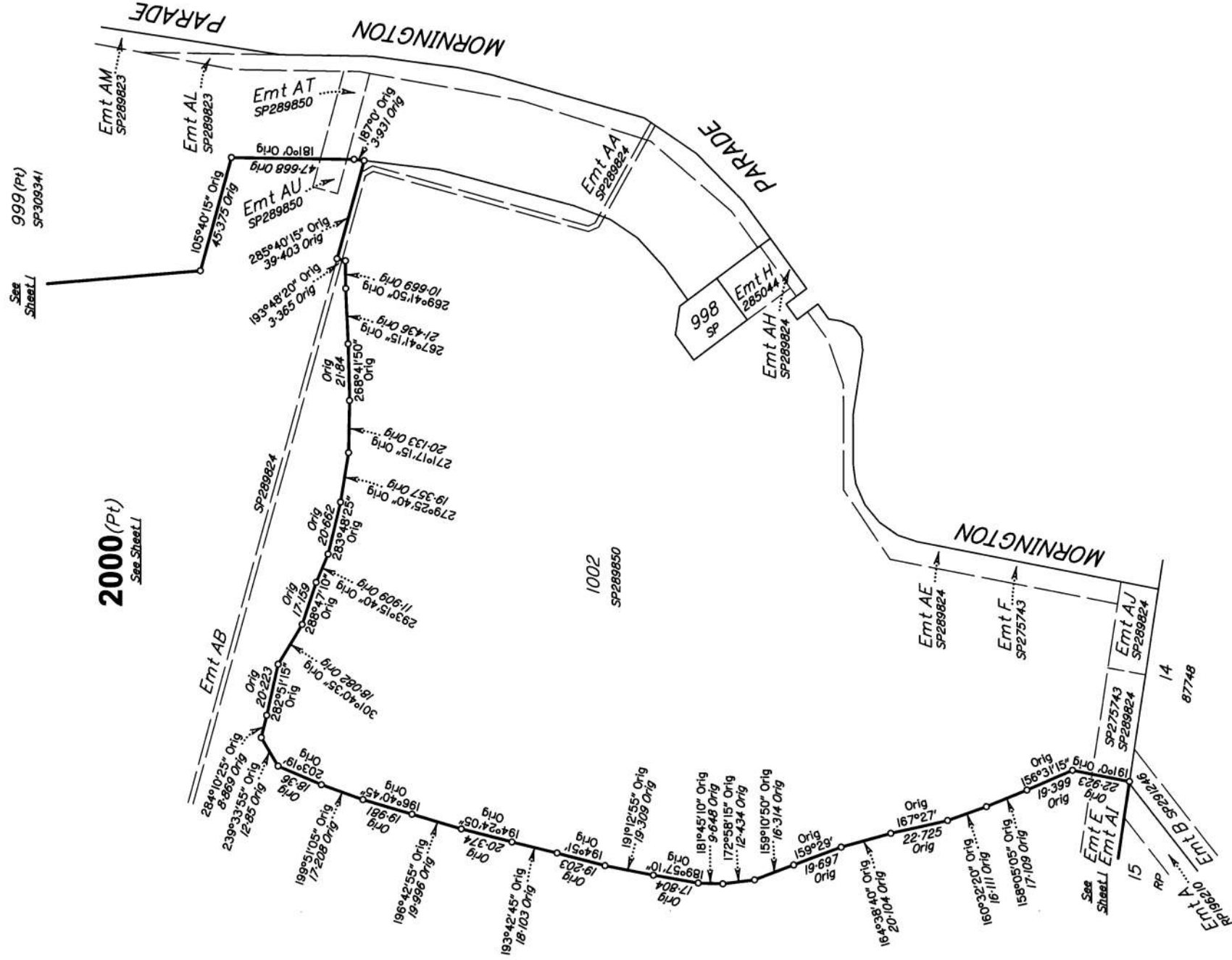
Cadastral Surveyor/Director * Date
*delete words not required

10. Lodgement Fees:

| | |
|------------------|----|
| Survey Deposit | \$ |
| Lodgement | \$ |
| New Titles | \$ |
| Photocopy | \$ |
| Postage | \$ |
| TOTAL | \$ |

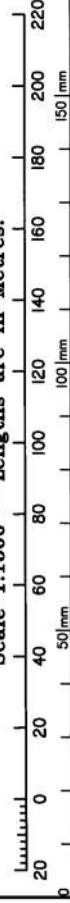
II. Insert Plan Number

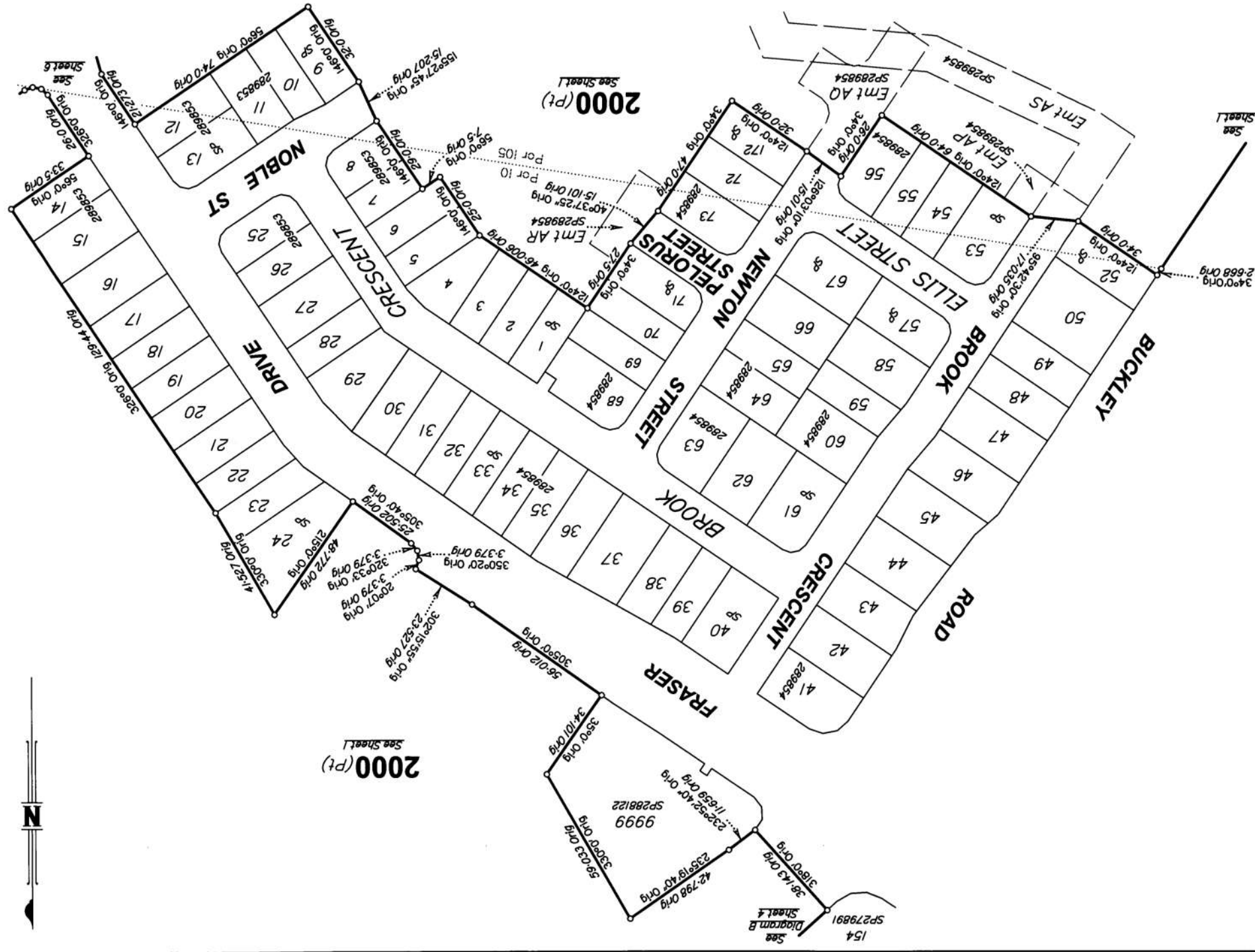
SP309372



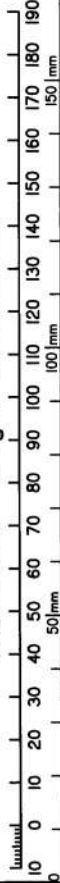
2000 (Pt)
See Sheet L

Scale 1:1500 - Lengths are in Metres.





Scale 1:1250 - Lengths are in Metres.



State copyright reserved.

Insert
Plan
Number

SP309372



Scale 1:750 - Lengths are in Metres.

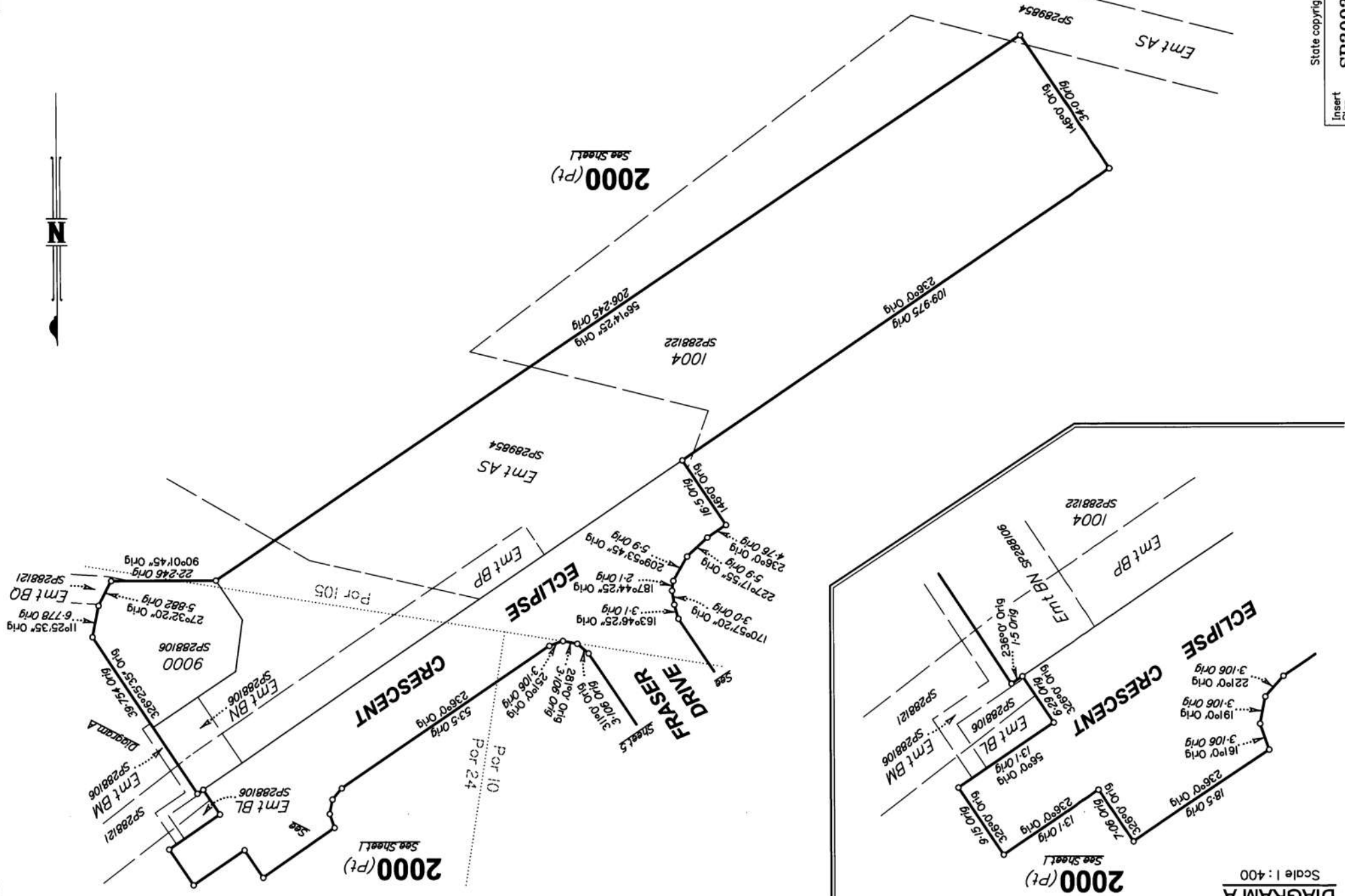
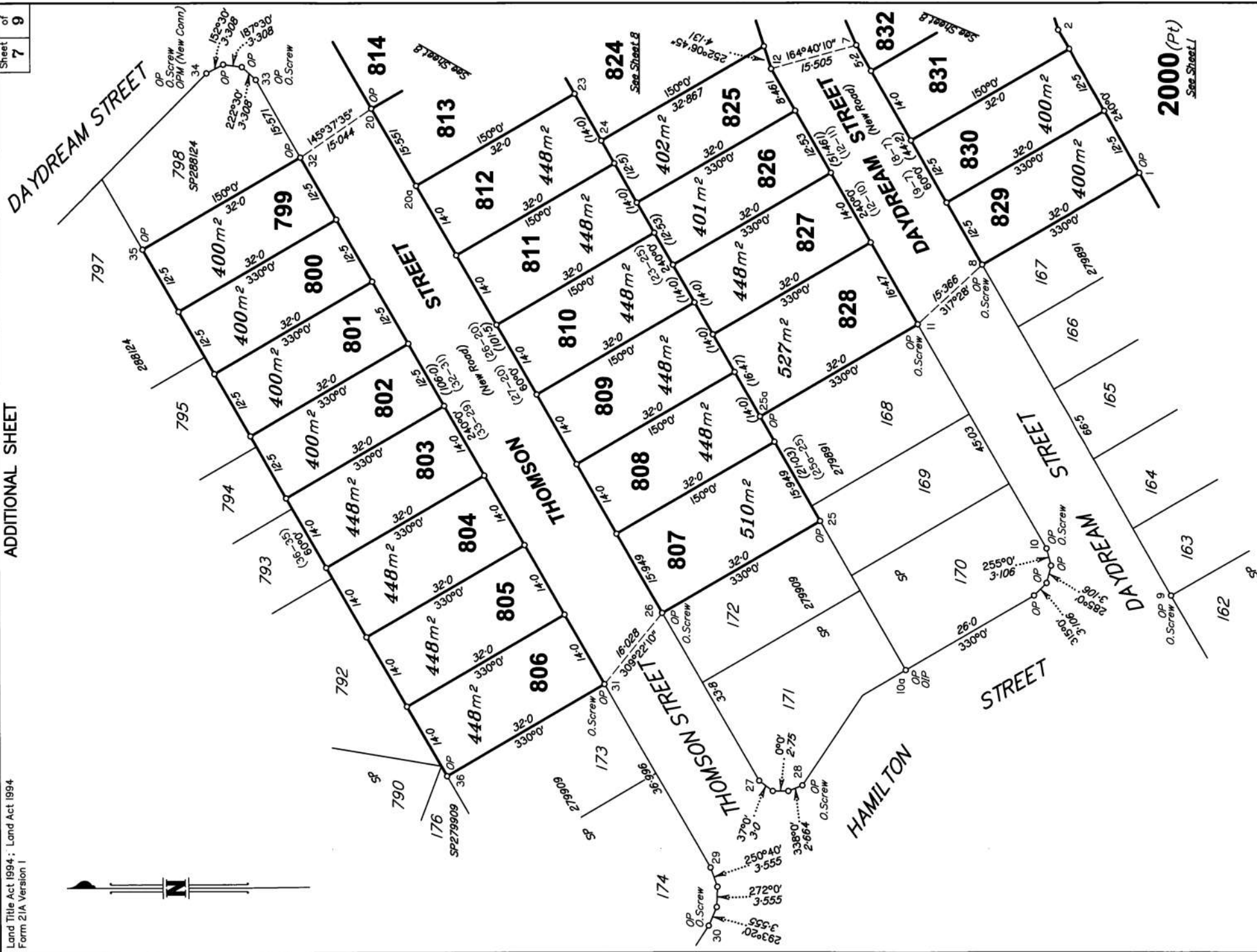


DIAGRAM A
Scale 1:400

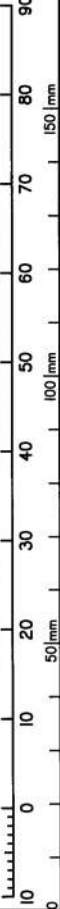
2000 (Pt)
See sheet 1

0 50mm 100mm 150mm



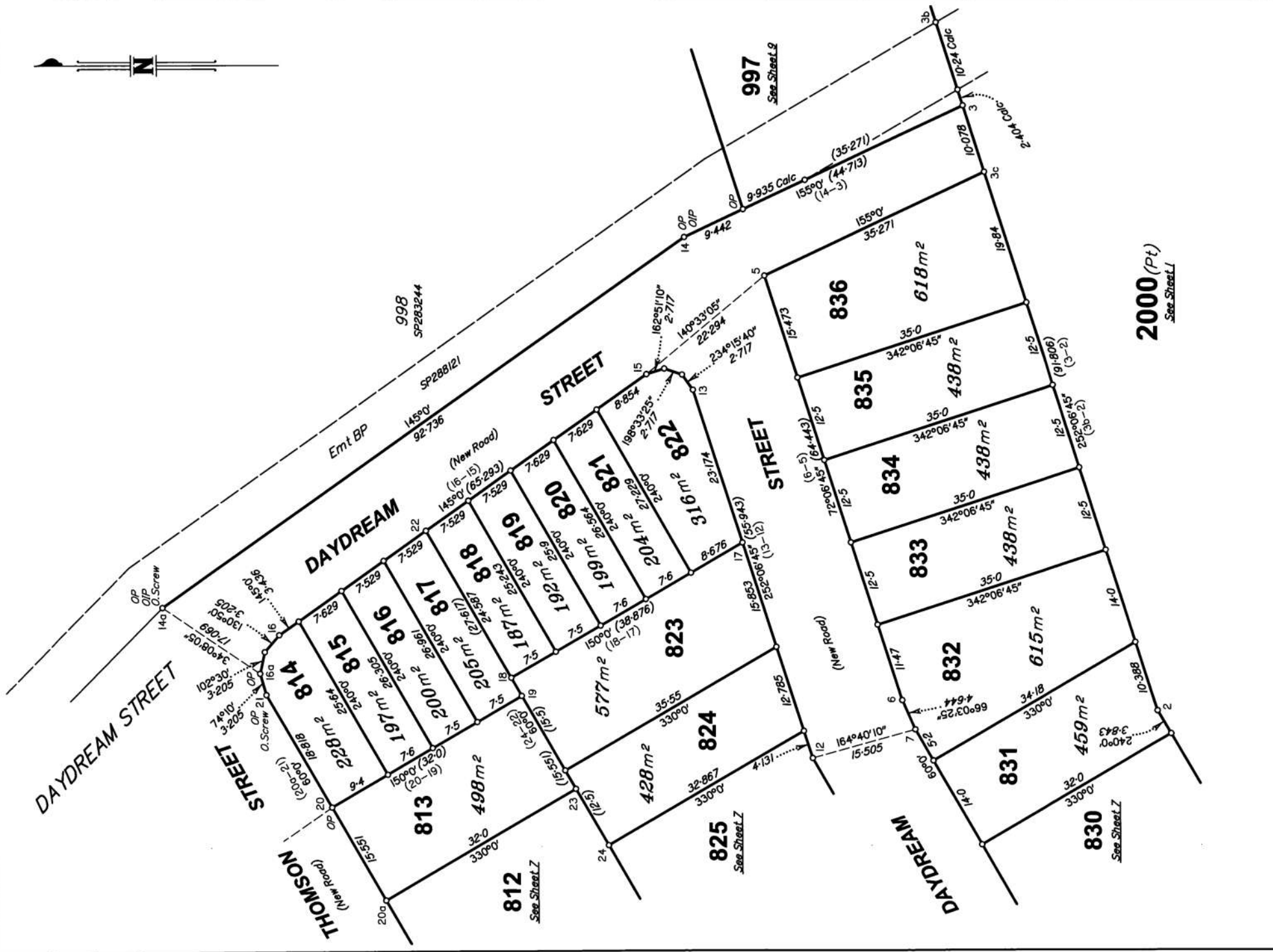
2000 (Pt)
See Sheet L1

Scale 1:600 - Lengths are in Metres.



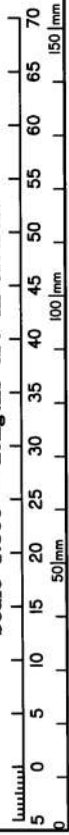
State copyright reserved.

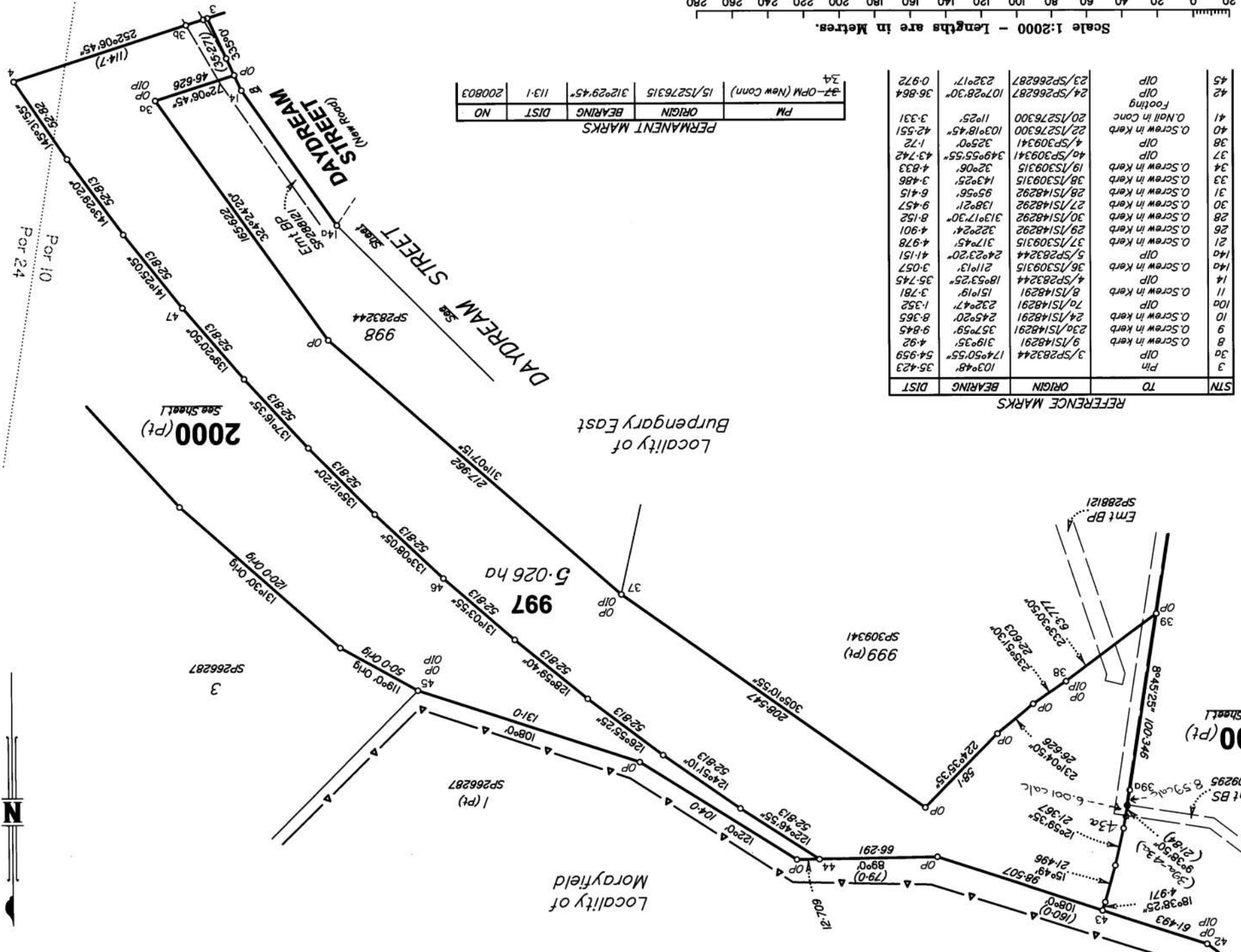
Insert
Plan
Number
SP309372



2000 (Pt)
See Sheet L

Scale 1:500 - Lengths are in Metres.





Locality of Morayfield

Locality of Burpengary East

5.026 ha

2000 (Pt)
See Sheet 1

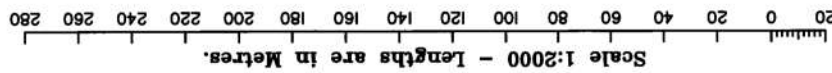
2000 (Pt)
See Sheet 1

| STN | TO | ORIGIN | BEARING | DIST |
|-----|-----------------|-------------|------------|-------------|
| 3 | PH | | | 35.423 |
| 3a | O.Screw in Kerb | 3/SP28244 | 174°50'55" | 54.959 |
| 8 | O.Screw in Kerb | 9/SP28244 | 319°35' | 4.92 |
| 9 | O.Screw in Kerb | 23a/SP28244 | 357°59' | 9.845 |
| 10 | O.Screw in Kerb | 24/SP28244 | 245°20' | 8.365 |
| 10a | O.P | | | 1.352 |
| 11 | O.Screw in Kerb | 8/SP28244 | 185°32'25" | 3.781 |
| 14 | O.P | | | 35.745 |
| 14a | O.Screw in Kerb | 36/SP28244 | 211°13' | 3.057 |
| 14b | O.P | | | 41.151 |
| 21 | O.Screw in Kerb | 37/SP28244 | 317°45' | 4.978 |
| 26 | O.Screw in Kerb | 29/SP28244 | 322°24' | 4.901 |
| 28 | O.Screw in Kerb | 30/SP28244 | 313°17'30" | 8.152 |
| 30 | O.Screw in Kerb | 27/SP28244 | 138°21' | 9.457 |
| 31 | O.Screw in Kerb | 28/SP28244 | 138°21' | 9.457 |
| 33 | O.Screw in Kerb | 38/SP28244 | 143°25' | 3.486 |
| 34 | O.Screw in Kerb | 19/SP28244 | 32°06' | 4.833 |
| 37 | O.P | | | 34.9°55'55" |
| 38 | O.Screw in Kerb | 40/SP28244 | 32°06' | 4.3742 |
| 38 | O.Screw in Kerb | 4/SP28244 | 325°0' | 1.72 |
| 40 | O.Screw in Kerb | 22/SP28244 | 103°18'45" | 42.551 |
| 41 | O.Nail in Conc | 20/SP28244 | 112°5' | 3.331 |
| 42 | O.P | | | 36.864 |
| 45 | O.P | | | 107°28'30" |

REFERENCE MARKS

| PM | ORIGIN | BEARING | DIST | NO | |
|----|-------------------|-------------|------------|-------|--------|
| 34 | 37-OPM (New Conn) | 15/SP276315 | 312°29'45" | 113-1 | 200803 |

PERMANENT MARKS



State copyright reserved.

Insert Plan Number
SP309372

