

PSM 724.18
 E: 498714.197
 N: 6999186.146
 RL: 14.859m



UNITYWATER PROJECT NUMBER 2016009402S29

Stage 29, North Harbour Estate

SEWER MAIN



DRAWING INDEX	
DRAWING NUMBER	DESCRIPTION
U-2021-3846	LOCALITY PLAN AND DRAWING INDEX

COORDINATE DATUM NOTE:
 HORIZONTAL COORDINATES(E,N) SUPPLIED ARE MAPPING GRID OF AUSTRALIA(MGA),
 ZONE 56 BASED ON THE UNIVERSAL TRANSVERSE MERCATOR PROJECTION AND THE
 GEOCENTRIC DATUM OF AUSTRALIA 1994.

ENGINEER'S CERTIFICATION

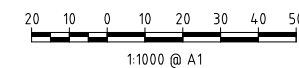
I, Mark Shaw, of KN GROUP PTY LTD, hereby certify that:
 1. The information contained in this drawing / document is in compliance with approved drawings and design.
 2. The new water and sewerage works defined by this drawing have been designed and constructed in accordance with the SEQ Code.
 3. This represents an accurate record of as-constructed works
 4. I accept responsibility for the information contained in this drawing / document.

Mark Shaw
 CIVIL, MECHANICAL, ELECTRICAL, PLUMBING
 0222 229 30 14-49306 +110707
 RPEQ (signature) RPEQ No. 17544 Date:

REGISTERED SURVEYOR'S CERTIFICATION

We, T.H. JENSEN BOWERS PTY LTD, hereby certify that the vertical and horizontal locations and dimensions shown on this plan are a true and correct record and were located by survey.

Registered Surveyor (sig) _____ Reg. Surveyor No. 3756 Date: 29/09/22



AS CONSTRUCTED

A1										
	DRAWN	JB	23/08/2022	CHECKED	SJM	23/08/2022	PASSED	DB	23/08/2022	INITIALS
	INDEX	DATE	Original Issue	DRAWN	CHECKED	PASSED	INITIALS	DATE		

JENSEN BOWERS
 SURVEYORS
 PLANNERS
 DEVELOPMENT ADVISORS
 jensenbowers.com.au
72 Costin Street, Fortitude Valley, Qld. 4006
 PO Box 790, Spring Hill, Qld. 4004
 T (07) 3852 1771 F (07) 3852 9818
 T.H. Jensen & Bowers Pty. Ltd. (Consulting Surveyors)
 ABN 52 010 872 687
 © Copyright reserved to Jensen Bowers Group Consultants Pty Ltd



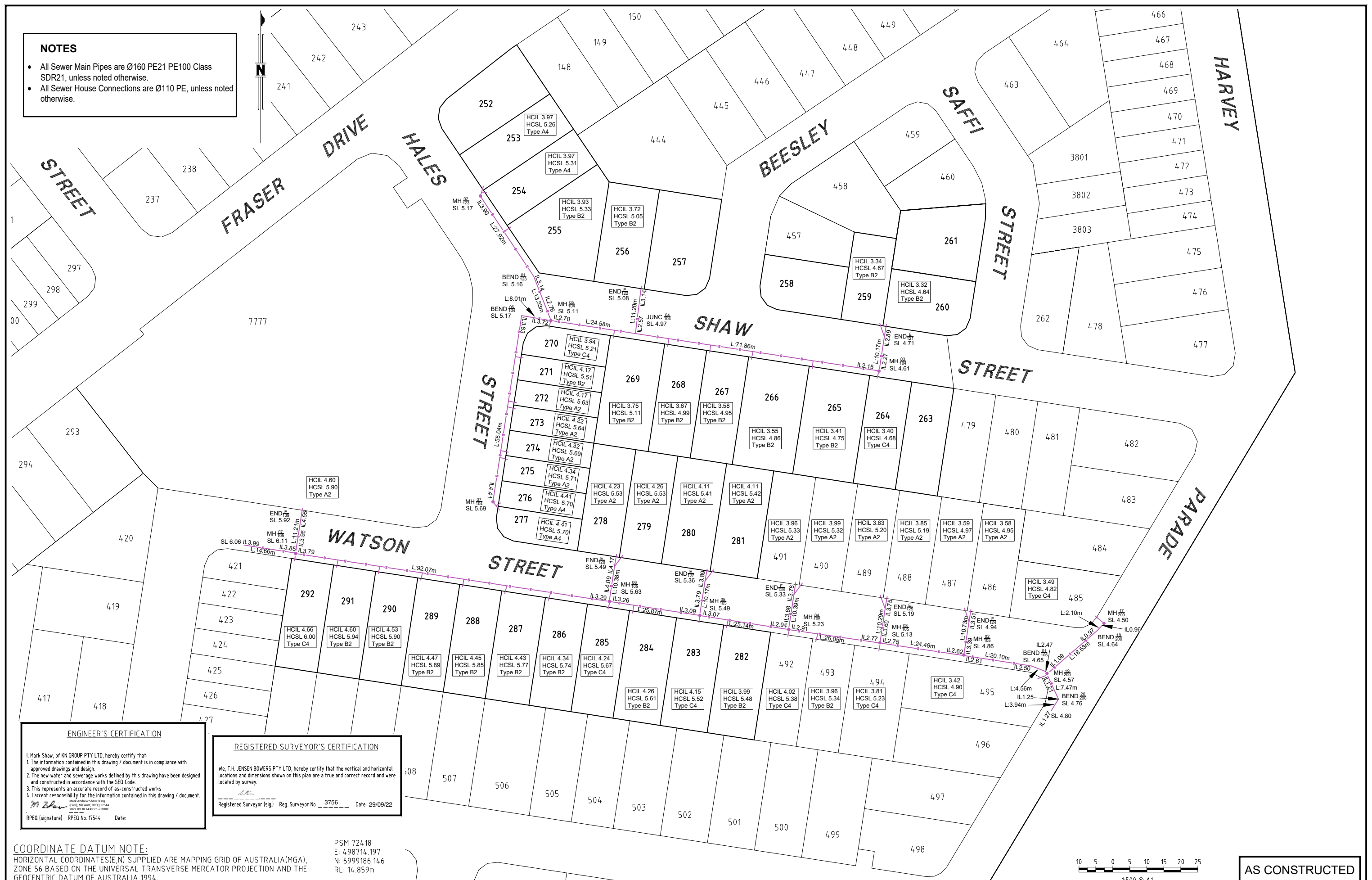
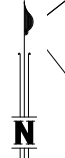
Unitywater

2016009402S29
North Harbour Stage 29

SHEET 1 OF 2 SHEETS	SCALE 1:1000
REVISION DATE 23-08-2022	REVISION A
DISCIPLINE CODE C	
DRAWING NO. U-2021-3846	

NOTES

- All Sewer Main Pipes are Ø160 PE21 PE100 Class SDR21, unless noted otherwise.
- All Sewer House Connections are Ø110 PE, unless noted otherwise.



ENGINEER'S CERTIFICATION

I, Mark Shaw, of KN GROUP PTY LTD, hereby certify that:
 1. The information contained in this drawing / document is in compliance with approved drawings and design.
 2. The new water and sewerage works defined by this drawing have been designed and constructed in accordance with the SEQ Code.
 3. This represents an accurate record of as-constructed works.
 4. I accept responsibility for the information contained in this drawing / document.

M. Shaw
 Mark Andrew Shaw BEng
 Civil, Mechanical, PE100
 2022.09.30 14:49:25 +10'00'
 RPEQ (signature) RPEQ No. 17544 Date: _____

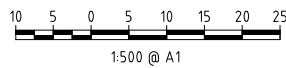
REGISTERED SURVEYOR'S CERTIFICATION

We, T.H. JENSEN BOWERS PTY LTD, hereby certify that the vertical and horizontal locations and dimensions shown on this plan are a true and correct record and were located by survey.

T.H. Jensen
 Registered Surveyor (sig) Reg. Surveyor No. 3756 Date: 29/09/22

COORDINATE DATUM NOTE:
 HORIZONTAL COORDINATES(E,N) SUPPLIED ARE MAPPING GRID OF AUSTRALIA(MGA), ZONE 56 BASED ON THE UNIVERSAL TRANSVERSE MERCATOR PROJECTION AND THE GEOCENTRIC DATUM OF AUSTRALIA 1994.

PSM 724.18
 E: 498714.197
 N: 6999186.146
 RL: 14.859m



AS CONSTRUCTED

A1	A	23/08/2022	Original Issue	JB	SJM	DB
	INDEX	DATE	REVISIONS	DRAWN	CHECKED	PASSED

DRAWN	JB	23/08/2022	
CHECKED	SJM	23/08/2022	
PASSED	DB	23/08/2022	



Unitywater
 2016009402529
 North Harbour Stage 29

SHEET 2 OF 2 SHEETS	SCALE 1:500
REVISION DATE 23-08-2022	REVISION A
DISCIPLINE CODE C	
DRAWING NO. U-2021-3846	