

PSM 724.18  
 E: 498714.197  
 N: 6999186.146  
 RL: 14.859m



# UNITYWATER PROJECT NUMBER 2016009402S30

## Stage 30, North Harbour Estate

### SEWER MAIN



DRAWING INDEX	
DRAWING NUMBER	DESCRIPTION
U-2022-4057	LOCALITY PLAN AND DRAWING INDEX

**COORDINATE DATUM NOTE:**  
 HORIZONTAL COORDINATES(E,N) SUPPLIED ARE MAPPING GRID OF AUSTRALIA(MGA), ZONE 56 BASED ON THE UNIVERSAL TRANSVERSE MERCATOR PROJECTION AND THE GEOCENTRIC DATUM OF AUSTRALIA 1994.

**ENGINEER'S CERTIFICATION**

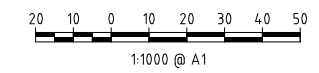
I, Mark Shaw, of KN GROUP PTY LTD, hereby certify that:  
 1. The information contained in this drawing / document is in compliance with approved drawings and design.  
 2. The new water and sewerage works defined by this drawing have been designed and constructed in accordance with the SEQ Code.  
 3. This represents an accurate record of as-constructed works  
 4. I accept responsibility for the information contained in this drawing / document.

*M. Shaw*  
 Mark Andrew Shaw BEng (Civil),  
 MIEAust, RPEQ 17544  
 RPEQ (signature) RPEQ No. 17544 Date: 03/11/22

**REGISTERED SURVEYOR'S CERTIFICATION**

We, T.H. JENSEN BOWERS PTY LTD, hereby certify that the vertical and horizontal locations and dimensions shown on this plan are a true and correct record and were located by survey.

*T.H. Jensen*  
 Registered Surveyor (sig) Reg. Surveyor No. 3756 Date: 03/11/22

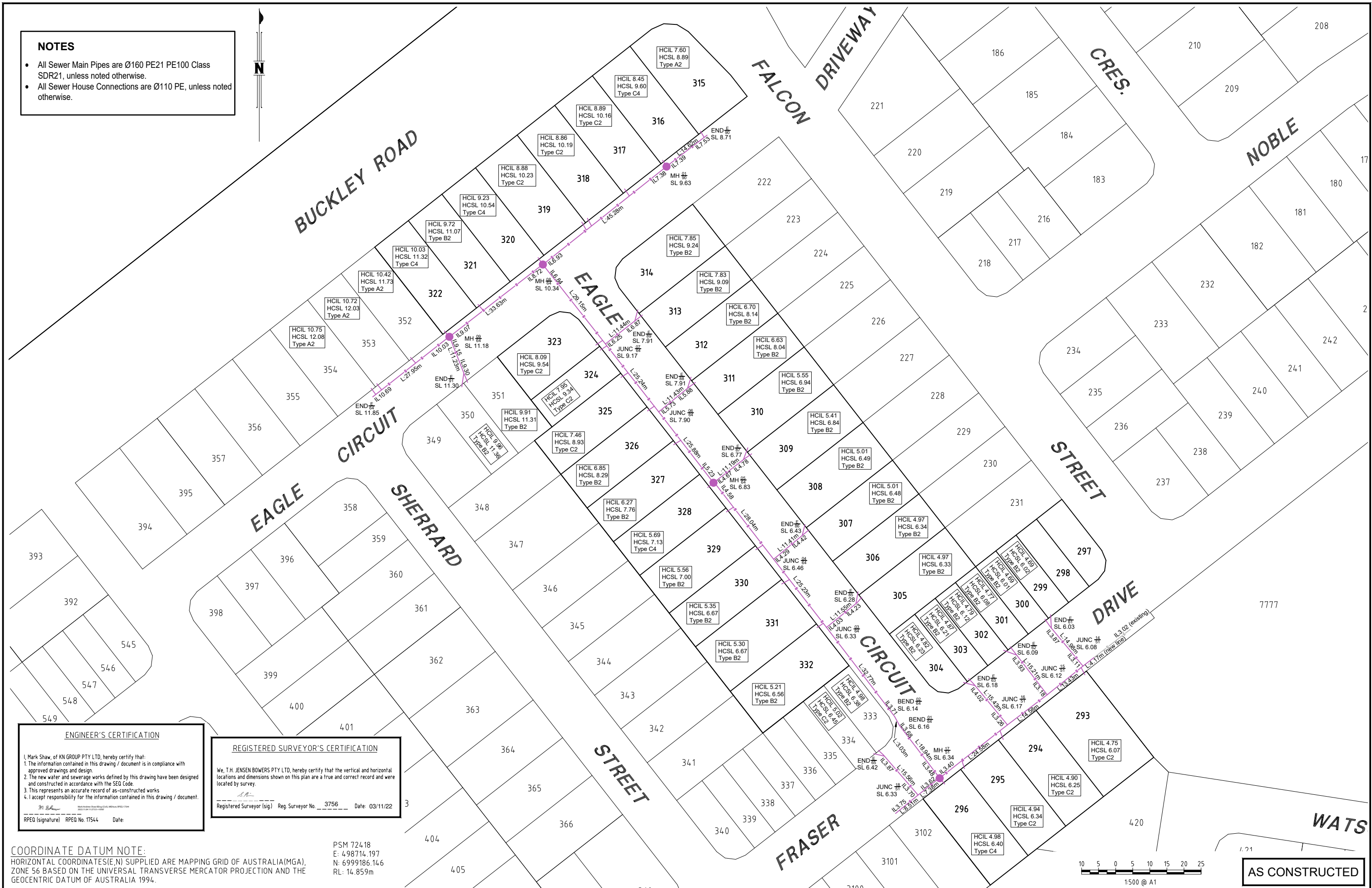


**AS CONSTRUCTED**

<b>A1</b>	INDEX	DATE	REVISIONS	DRAWN	CHECKED	PASSED	INITIALS	DATE	 <small>72 Costin Street, Fortitude Valley, Qld. 4006          PO Box 790, Spring Hill, Qld. 4004          T (07) 3852 1771 F (07) 3852 9818          T.H. Jensen &amp; Bowers Pty. Ltd. (Consulting Surveyors)          ABN: 52 010 872 657          © Copyright reserved to Jensen Bowers Group Consultants Pty Ltd</small>	 <b>Unitywater</b> <small>2016009402S30          North Harbour Stage 30</small>	SHEET 1 OF 2 SHEETS	SCALE 1:1000
											REVISION DATE 03-11-2022 REVISION <b>A</b>	DISCIPLINE CODE <b>C</b>

**NOTES**

- All Sewer Main Pipes are Ø160 PE21 PE100 Class SDR21, unless noted otherwise.
- All Sewer House Connections are Ø110 PE, unless noted otherwise.



**ENGINEER'S CERTIFICATION**

I, Mark Shaw, of KN GROUP PTY LTD, hereby certify that:

1. The information contained in this drawing / document is in compliance with approved drawings and design.
2. The new water and sewerage works defined by this drawing have been designed and constructed in accordance with the SEQ Code.
3. This represents an accurate record of as-constructed works.
4. I accept responsibility for the information contained in this drawing / document.

*M. Shaw*  
RPEQ (signature) RPEQ No. 17544 Date: \_\_\_\_\_

**REGISTERED SURVEYOR'S CERTIFICATION**

We, T.H. JENSEN BOWERS PTY LTD, hereby certify that the vertical and horizontal locations and dimensions shown on this plan are a true and correct record and were located by survey.

*T.H. Jensen Bowers*  
Registered Surveyor (sig) Reg. Surveyor No. 3756 Date: 03/11/22

**COORDINATE DATUM NOTE:**  
HORIZONTAL COORDINATES(E,N) SUPPLIED ARE MAPPING GRID OF AUSTRALIA(MGA), ZONE 56 BASED ON THE UNIVERSAL TRANSVERSE MERCATOR PROJECTION AND THE GEOCENTRIC DATUM OF AUSTRALIA 1994.

PSM 724.18  
E: 498714.197  
N: 6999186.146  
RL: 14.859m



**AS CONSTRUCTED**

<b>A1</b>	A	03/11/2022	Original Issue	JB	SJM	DB
	INDEX	DATE	REVISIONS	DRAWN	CHECKED	PASSED

DRAWN	JB	03/11/2022
CHECKED	SJM	03/11/2022
PASSED	DB	03/11/2022

**JENSEN BOWERS**  
SURVEYORS PLANNERS DEVELOPMENT ADVISORS  
72 Costin Street, Fortitude Valley, Qld. 4006  
PO Box 720, Spring Hill, Qld. 4004  
T (07) 3852 1771 F (07) 3252 9818  
T.H. Jensen & Bowers Pty. Ltd. (Consulting Surveyors)  
ABN: 52 010 872 607  
© Copyright reserved to Jensen Bowers Group Consultants Pty Ltd



**Unitywater**  
2016009402530  
North Harbour Stage 30

SHEET 2 OF 2 SHEETS	SCALE 1:500
REVISION DATE 03-11-2022	REVISION A
DISCIPLINE CODE C	
DRAWING NO. U-2022-4057	